

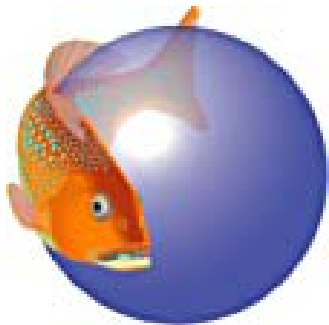
CRISP



Coral Reef InitiativeS for the Pacific
Initiatives Corail pour le Pacifique



Information Systems to Support Science and Education Cooperation in the Pacific



www.fishbase.org



www.sealifebase.org



www.reefbase.org

Project Objectives

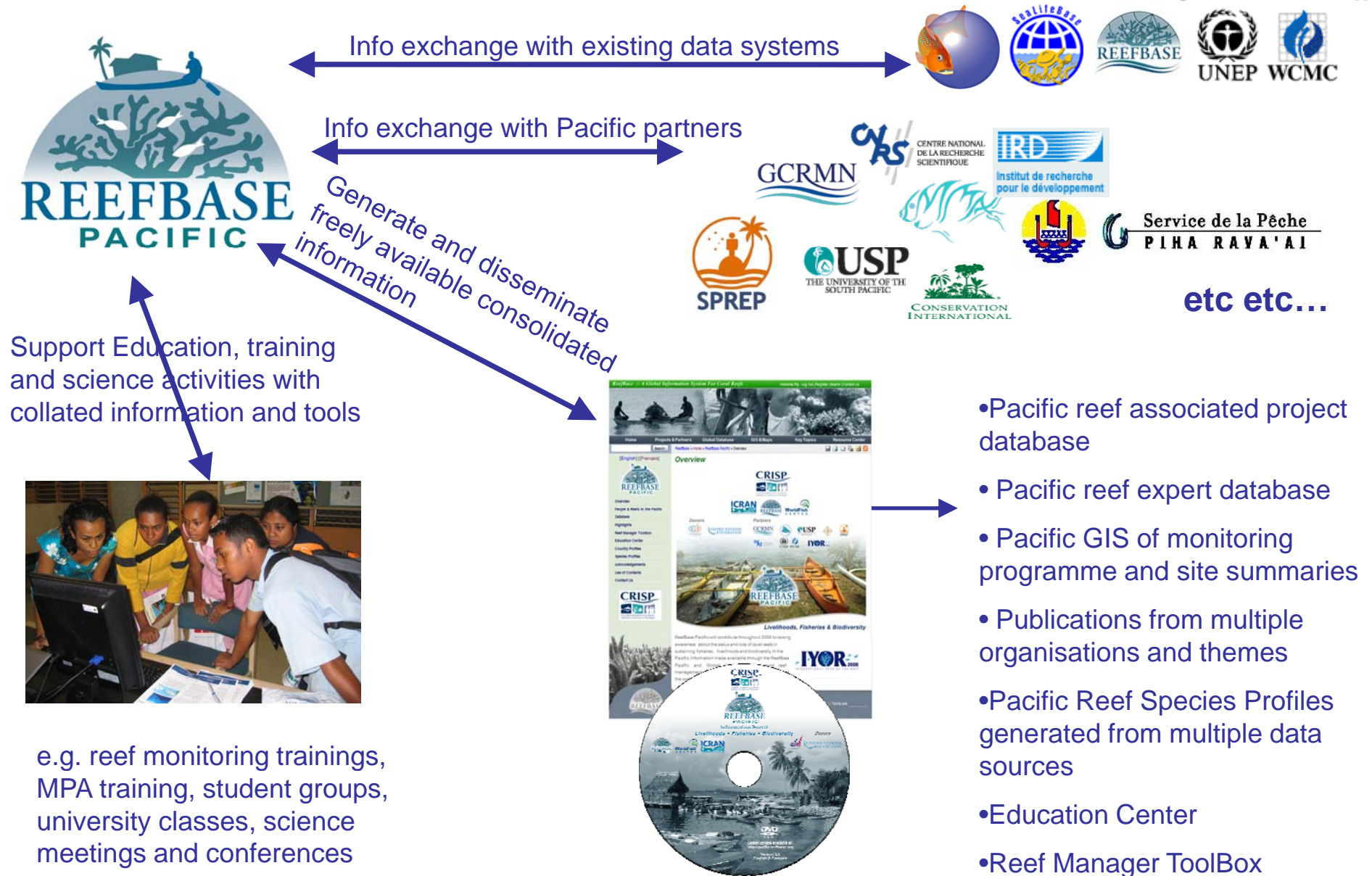


To improve quality and accessibility of data and information to support improved fisheries and aquatic resource management, conservation, research and education

- To establish new innovative ways to retrieve data and to link with, and build on, existing information management systems
- To support networking of projects, people and organisations that have common interest, experiences and needs for science etc
- To support data and information consolidation and dissemination
- To provide a secure and accessible locations that promotes the activities and outputs of other organisations and projects in the region

What have we done

to Support Science and Education Cooperation in the Pacific ?



Information Systems Role in Education

What do we do?

- Provide a location that a variety of education/outreach materials can be accessed to support outreach activities and education of communities, schools and the general public
- Provide information tools that support a range of learning (including scientists, students and communities)
- Actively present and work with universities and their students to ensure they have access to information tools available, and awareness of these tools and the skills to use them

What more should we, and our regional stakeholders do?

- Continue to encourage access to these systems by students in a range of tertiary institutes
- Support, encourage and promote the use of existing information systems
- Support the growth, by contribution of information outputs (materials designed for education/outreach) to Reefbase and other central repositories

Information Systems Role in Science Collaboration

What do we do?

- Support growing of knowledge (repository for publications reporting experiences in advances in science and management)
- Support sharing of approaches and knowledge (project database, monitoring site database, database of reef experts)
- Provide a site and mechanisms for regional data collation and analysis (e.g. bleaching database made up of observations from multiple agencies/people from across the region)

What more should we do in the region?

- Encourage and support appropriate information reaching the public domain, **via mechanisms that provide information freely** and that are easily accessible; eg. provide records of projects undertaken, including scientific aims, contact information etc, into a public interface
- Allocate some 'information sharing/mobilisation' activities when planning projects

ACKNOWLEDGEMENTS

- **Coral Reef InitiativeS for the Pacific (CRISP)**
- **WorldFish Center (WFC)**
- **French Embassy- Fiji**