

An underwater photograph of a coral reef. The scene is dominated by a large, branching yellowish-brown coral structure in the center. To its right, there is a large, greyish, porous coral formation. The water is clear and blue, with several small fish swimming around. The overall lighting is bright, suggesting a shallow depth.

Regional Initiative for Coral Reefs Conservation and Management in the South Pacific

Project # 2 - 2B

Reef Restoration

**Project team : CAREX Environnement - Consulting engineers, France
FSPI - Foundation of the Peoples of the South Pacific
International, Fiji**

CAREX Environnement

Environmental Consulting Engineers
Aix-en-Provence, France

Specialised in tropical studies

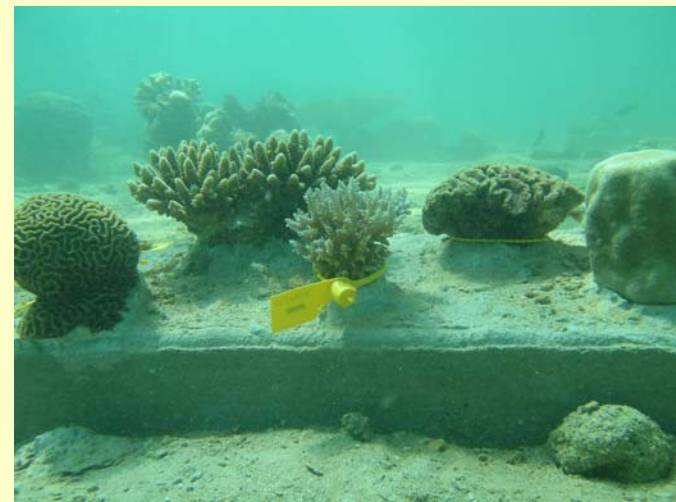
- Biological assessment & monitoring
- Marine resources management plans
- Engineering in coastal & marine areas
- Reef mapping (G.I.S.)



CAREX Environnement

Reef Restoration Activities

- Use of artificial structures and natural substrata
- Coral transplantation and coral planting
 - **Moorea** : Coral Garden
 - **Bora Bora** : Shoreline protection and coral garden
 - **Mayotte** : Coral rescue (EIA) and scientific experiment
 - **Guide** on reef restoration



FSPI



Foundation of the Peoples of the South Pacific International Secretariat

FSPI works with Pacific communities
through people-centred programmes
to foster self-reliance within
a changing world

The Foundation of the Peoples of the South Pacific International

FSP International is a network of independent South Pacific NGO's
working in partnership in development across the South Pacific

Regional Secretariat
Suva, Fiji

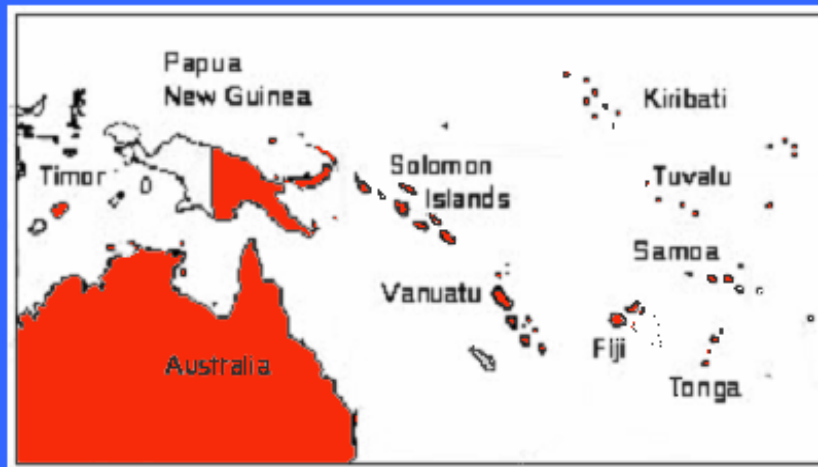
Timor Aid
East Timor

The Foundation for the People of
the South Pacific
Kiribati

Palau Conservation Society
Palau

Tuvalu Association of Non-
Government Organizations
Tuvalu

Foundation for People and
Community Development
Papua New Guinea



O Le Siosiomaga Society
Western Samoa

Solomon Islands
Development Trust
Solomon Islands

Tonga Trust
Tonga

The Foundation for the People of
the South Pacific
Vanuatu

Partners In Community
Development Fiji
Fiji

Australian Foundation
for the Peoples of Asia
and the Pacific
Australia

Counterpart
International
United States

Just World Partners
United Kingdom
Metropolitan member

Project Organisation

Phase 1

Organisation

Overall
project
organisation

Restoration
sites selection

Phase 2

Field work

- Preliminary studies
- Restoration field work
- Monitoring surveys

Phase 3

"Book"
on reef
restoration

Phase 4

Final
synthesis
Project
delivery

Phase 1

- **Bibliography research**

- Past, in progress or planned reef restorations
- Assessment of the needs for reef restorations in the South Pacific

Technical Workshop - Nouméa (January 2005)

- **Overall organisation**

FSPI/CAREX and other CRISP projects

- **Selection of 2 restoration sites**

Sites should be chosen according to local communities needs and approval, potential for reef recoverability and other CRISP projects (MPAs)

Phase 2

- Preliminary studies

- Bibliography
- Precise location of the restoration site
- Initial environmental assessment (Point 0)
- Restoration strategy : methodology, logistics, etc.

1 week per site - FSPI:CAREX = 1:1

- Restoration field work

2 weeks per site - FSPI:CAREX = 1:1



Phase 2

- Monitoring surveys

- 4 surveys : +1, +6, +12 and +18 months after the end of restoration efforts
- Conducted by FSPI and local teams (communities participation)

1 week per site, per survey - FSPI:CAREX = 4:1



Phase 3

Writing of documents related to reef restoration

- Edition of a **book** for management and decision-making
- Production of **community materials** (pamphlet, guide, handbook, comics, etc.)
- In French and English



FSPI:CAREX = 1:4

Phase 4

- **Final synthesis report and future prospectives** (e.g. Integrating the results into existing networks and training the different users, managers and scientists)
- **Project delivery to stakeholders and AFD**

FSPI:CAREX = 1:1



Merci à
l'AFD !